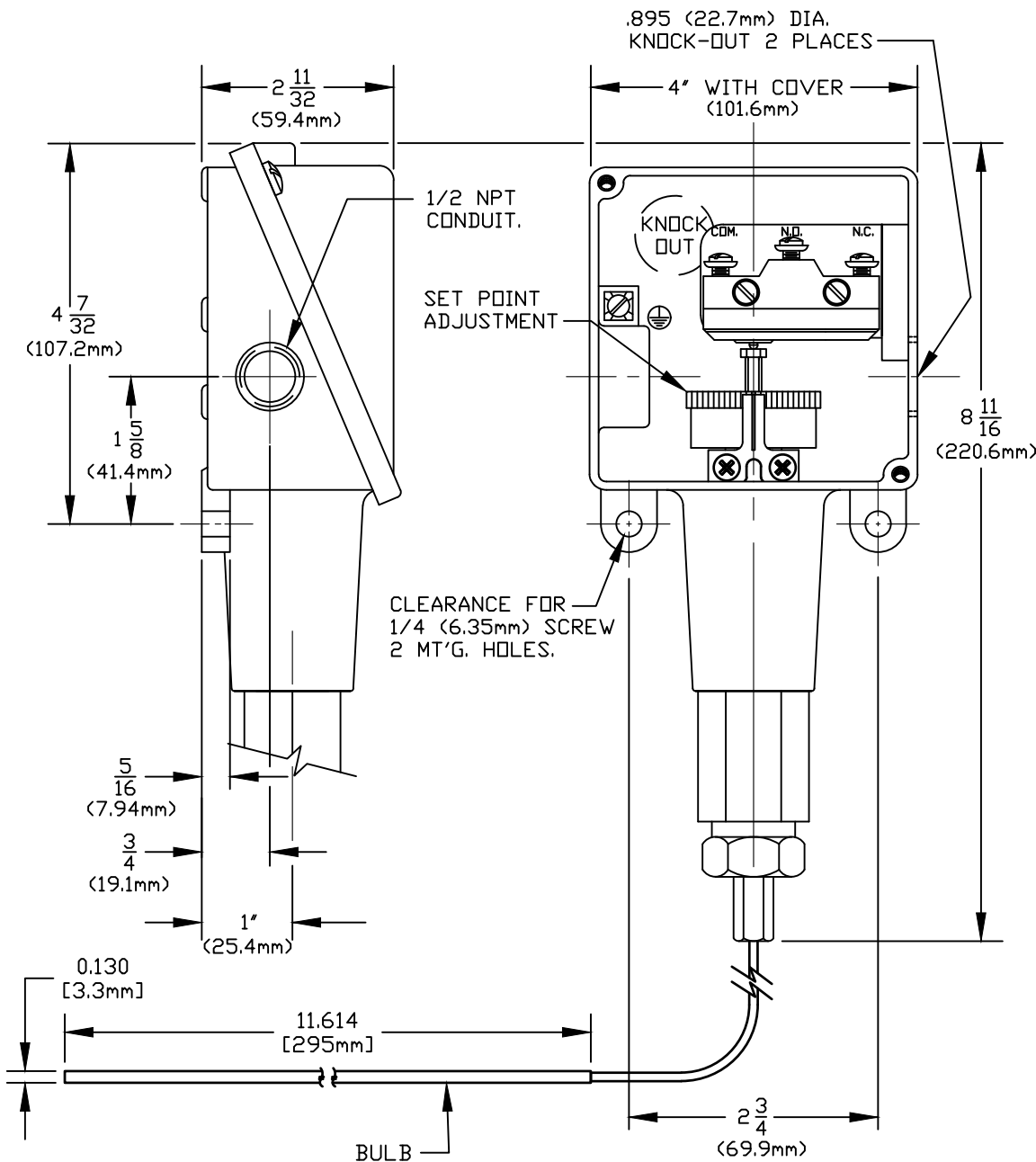


UL LISTED, CSA CERTIFIED.
 CONFORMS TO NEMA 4X REQUIREMENTS.
 I & M SHEET IMT100.



CUSTOMER:
 U.E.C. WATERTOWN
 (FOR HEAT TRACE APPLICATIONS)

CUSTOMER PART NO.:
 N/A

U.E. TYPE:
 E100-13545

SPECIFICATIONS:
 RANGE: 25 TO 325°F. 360°F OVER TEMP.
 ELECTRICAL RATING: 22 A 480 VAC
 CAPILLARY & BULB: 10 ft st/st
 DIAL ACCURACY AT SET POINT: ±7°F.
 DIAL ACCURACY AT FULL RANGE: ±15°F.

SYM	DESCRIPTION	DATE	DWN	APPD
B	SET POINT REMOVED ECN#E7482	4/29/24	KLF	RCI
A	FIRST ISSUE. REPLACES SPEC. SHEET: 12710-1. ECN#E3275	8-11-09	SR	RAM
REVISIONS				

ORIGINAL DATE	8-11-09
DRWN	S. ROBAK
CHKD	PLW
APPD	R. MCCAREY

UNLESS OTHERWISE SPECIFIED
 DIMENSIONS ARE IN INCHES
 TOLERANCES ON FRACTIONS ±1/64
 2 PLACE DEC 3 PLACE DEC ANGLES
 ±0.010 ±0.005 ±1/2°
 DO NOT SCALE THIS DRAWING

TITLE	E100-13545
UE STD HEATRACE	SCALE NONE

DF001D	UNITED ELECTRIC CONTROLS COMPANY WATERTOWN * MASSACHUSETTS
DWG NO	A-13953