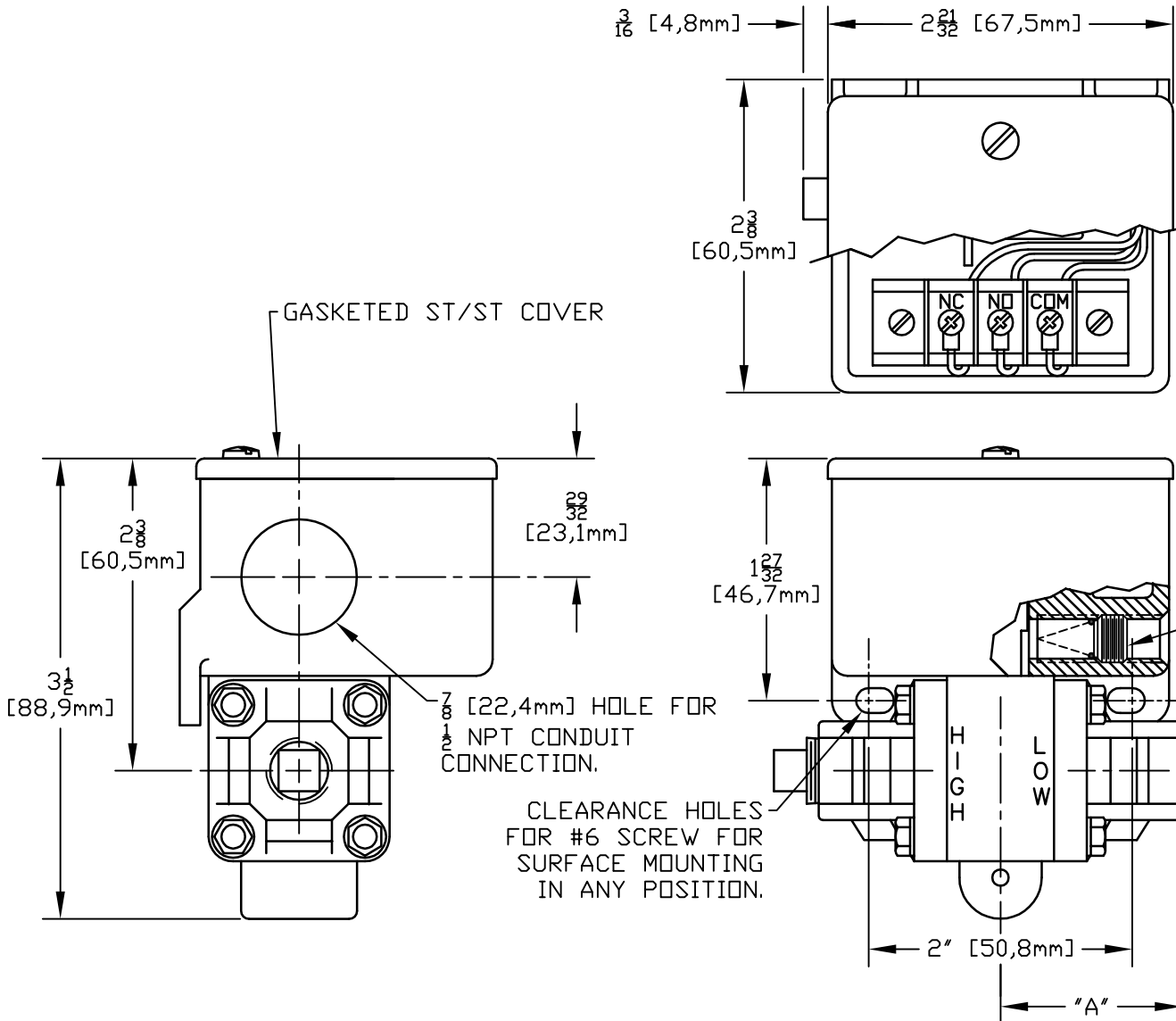



**SPECIFICATIONS:**

RANGE: 2 TO 30" Hg Vac  
 (-68,9 mbar to -1,0 bar)  
 E/R: 5 A 125/250 VAC  
 DEADBAND: 2.5" Hg (84,7 mbar)  
 PROOF PRESSURE: 150 psi (10,3 bar)  
 P/C: SEE CHART  
 WETTED MATERIAL: SEE CHART  
 U.L. LISTED, CSA CERTIFIED



G	2 21/32 DIMENSION ON TOP VIEW WAS 2 3/8 ECN# E3228	6-30-09	DWD	RAM
F	ADDED METRIC EQUIVALENTS. DELETED ETHYLENE PROPYLENE AS WETTED MATL. ECN#E1157	3-22-05	S.R.	HN
E	ADDED bar. ECN# E0054	10/9/02	PLW	H.N.
D	REVISED VIEW OF PRESSURE CONNECTION. DIM. "A" FOR MODEL 24-015 WAS 1-1/4. ECN# C8259	7/29/99	PLW	A.M.
C	REDEFINED DIM. "A", REVISED PLUG & ADDED 3/16" DIM. ECN#C7484	7-29-98	P.W.	J.J.M.
B	REVISED PRESSURE CONNECTION VIEW. ECN#C7151	3-5-98	P.W.	A.M.
A	FIRST ISSUE, WAS ON A-12840. ECN#C6284	5-14-97	P.W.	J.J.M.
SYM	DESCRIPTION	DATE	DWN	APPD
REVISIONS				

24-019	1/4 NPT	POLYETHER DIAPHRAGM & BRASS.	1 9/16 39,6mm
24-015	1/4 NPS	POLYETHER DIAPHRAGM & POLYSULPHONE	1 7/16 36,6mm
MODEL NUMBER	P/C SIZE	WETTED MATERIALS	DIM. "A"
ORIGINAL DATE 5-7-97		TITLE	
DRWN PETER WEILER		DELTA-PRO SWITCH #24 SERIES	
CHKD A.BARTER		 UNITED ELECTRIC CONTROLS COMPANY WATERTOWN * MASSACHUSETTS	
APPD J.MONDELLO			
UNLESS OTHERWISE SPECIFIED DIMENSIONS ARE IN INCHES		MODELS: (015 & 019)	
DO NOT SCALE THIS DRAWING		SCALE 3/4:1	
		DWG NO A-13402	