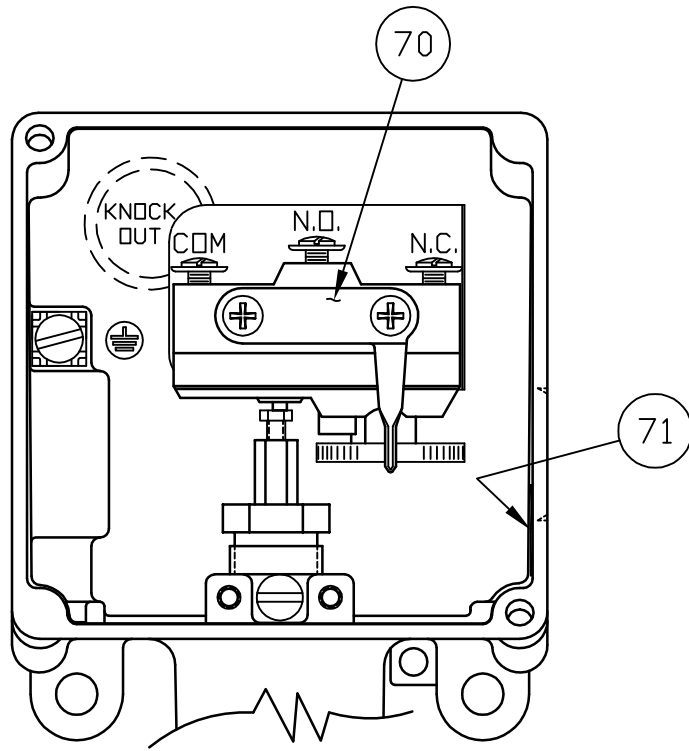


FOR ASSEMBLY REF: M-12707



SPECIFICATIONS:

UE TYPE: H100-15884 SIMILAR TO H100-616
 CUSTOMER NAME: UEC ST'D.
 CUSTOMER PART NO.: N/A
 RANGE: 700 TO 5000 psi
 OVER RANGE PRESSURE: 6000 psi
 PROOF PRESSURE: 10,000 psi
 ELECTRICAL RATING: 15A 480VAC
 WETTED MATERIALS: BUNA-N, 303 st/st
 * SWITCH: ADJUSTABLE SWITCH OPTION

APPROVALS:

UL RECOGNIZED
 CSA CERTIFIED
 CE COMPLIANT TO LOW VOLTAGE DIRECTIVE


* INDICATES EXCEPTION TO STANDARD PRODUCT

THIS DOCUMENT IS PROPRIETARY PROPERTY OF UNITED ELECTRIC CONTROLS. UNAUTHORIZED USE IS STRICTLY PROHIBITED.

SYM	DESCRIPTION	DATE	DWN	APPD
C	'OVER RANGE PRESSURE' WAS 'MAX. WORKING PRESSURE' PER ECN# E3510	2/19/10	PLW	I.M.
B	DELETED MFR. INSTRUCT: 'CALIBRATE @ 3100 psi RISE, SET DEADBAND @ 325±25 psi'. DELETED SPECS: 'SET POINT: 3100 psi RISE' & 'SET POINT (M201)'. ECN#E2910	10-29-08	SR	LK
A	FIRST ISSUE. ECN#E2437	9-6-07	S.R.	LK
REVISIONS				

ORIGINAL DATE	9-6-07
DRWN	S. ROBAK
CHKD	PLW
APPD	LEVON
UNLESS OTHERWISE SPECIFIED DIMENSIONS ARE IN INCHES	
TOLERANCES ON FRACTIONS ±1/64	
2 PLACE DEC 3 PLACE DEC ANGLES	
±0.010	±0.005 ±1/2°
DO NOT SCALE THIS DRAWING	

TITLE	H100-15884
SCALE	NONE

DF001D

UNITED ELECTRIC CONTROLS COMPANY WATERTOWN * MASSACHUSETTS
DWG NO 12707-7