

**COVER REMOVED  
IN FRONT VIEW**

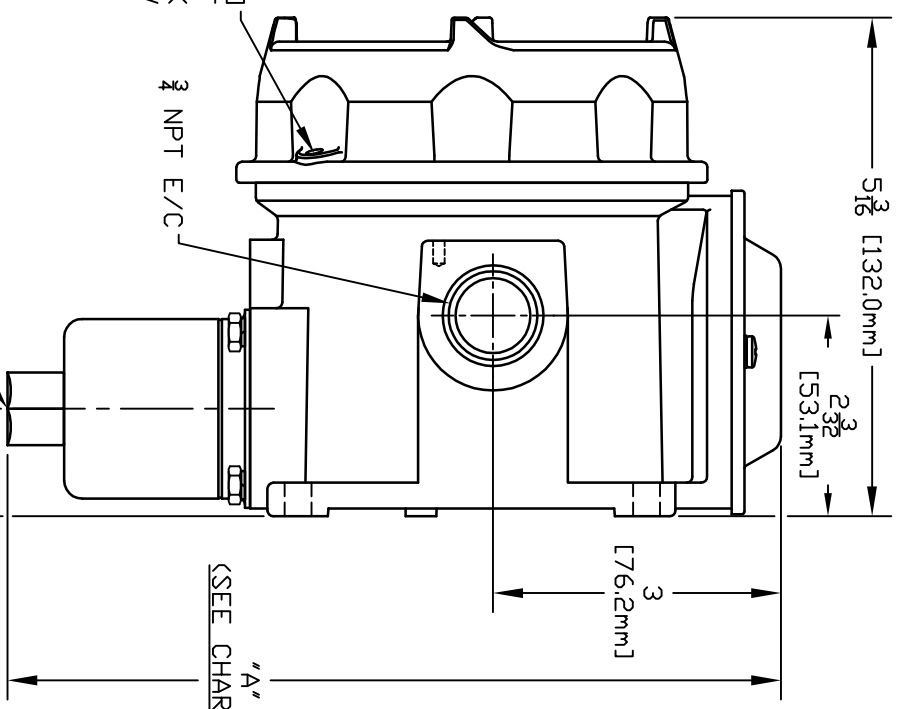


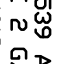


CHART "A"

126-164	8 3/8 [205.6mm]	1/4
S126B-S164B	8 1/2 [215.9mm]	1/2
MODEL NO	DIM "A"	NPT

CHART "B"

164 S164B	0 to 200	0 to 13.8
156 S156B	0 to 100	0 to 6.9
146 S146B	0 to 30	0 to 2.1
144 S144B	0 to 20	0 to 1379 mbar
137 S137B	2 to 80" wc	5.0 to 1991 mbar
134 S134B	30" Hg Vac to 20 psi	-1.0 bar to 1379 mbar
126 S126B	30" Hg Vac to 0 psi	-1.0 to 0
MODEL NO.	psi	bar
ADJUSTABLE RANGE		
LOW END OF RANGE ON FALL		
HIGH END OF RANGE ON RISE		

**APPROVALS:**  
 CE LISTED  
 CLASS I, DIVISIONS 1 & 2,  US  
 GROUPS B, C & D  
 CLASS II, DIVISIONS 1 & 2,  
 GROUPS E, F & G  
 CLASS III  
 -50°C ≤ Tamb, ≤ +71°C  
 CLASS I, ZONE 1, GROUP IIB + H<sub>2</sub> T6  
 ENCLOSURE TYPE 4X, 7, 9  
 0539 ATEX APPROVED  
 II 2 G/D EEx d IIC T6  
 -40°C ≤ Tamb, ≤ +71°C  
 IP66  
 CE COMPLIANT TO  
 APPLICABLE DIRECTIVES)

I & M SHEET IMP120

M	UPDATED ENCLOSURE.	ECH#E4345.	2-17-12	RCI	SJM
L	REPLACED CENELEC APPROVAL WITH ATEX APPROVAL.	ECH#E0368	6-17-03	S.R.	LK
K	CHANGED kPa, TD bar	ECH#E0053	10/7/02	AB	HN
J	ADDED CENELEC & CE APPROVALS.	ECH#E0009	8-27-02	S.R.	LK
H	UPDATED ENCLOSURE & COVER.	ECH#C9734	2/27/02	S.R.	LK
G	REDRAWN, ADDED MODELS 126-164 REVISED PER REDESIGN.	ECH#C5508	4-12-96	S.R.	JJM
SYM	DESCRIPTION	DATE	DWN	APPD	

ORIGINAL DATE	7-29-86	TITLE	H121
DRWN	PETER WEILER		126-164
CHKD	N.MOCKAY JR.		S126B-S164B
APPD	A. MINASSIAN		
UNLESS OTHERWISE SPECIFIED DIMENSIONS ARE IN INCHES			
DO NOT SCALE THIS DRAWING	SCALE	1:2	
DWG NO	A-12126	DF 001	REV. C
UNITED ELECTRIC CONTROLS COMPANY WATERTOWN * MASSACHUSETTS			