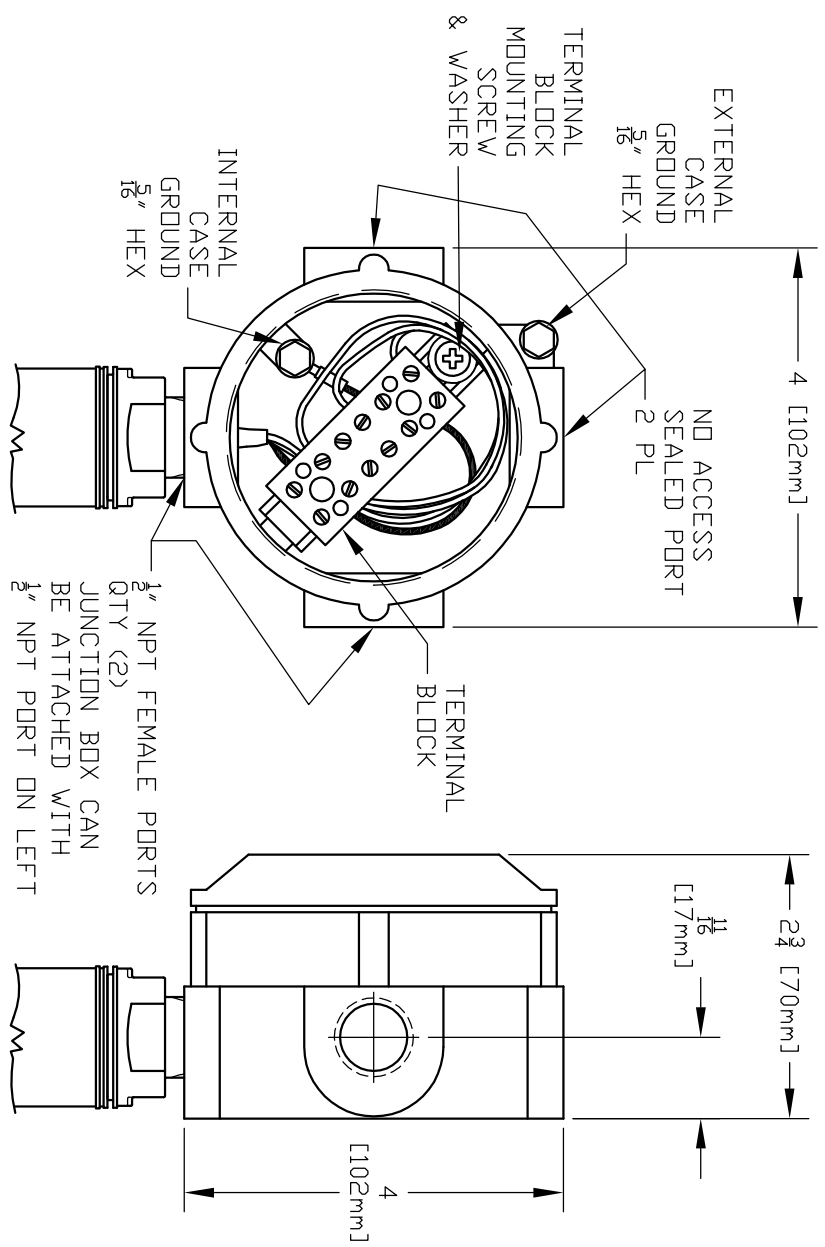


- ATTENTION**
- DID NOT EXCEED MAXIMUM ELECTRICAL RATING LISTED ON PRODUCT NAMEPLATE.
 - WIRE ACCORDING TO NATIONAL AND LOCAL ELECTRICAL CODES.
 - TERMINAL BLOCK ACCEPTS 11-21 AWG (0.5-4.0mm²) WIRE.



FRONT VIEW WITHOUT COVER

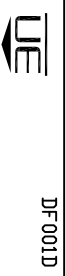
SIDE VIEW WITH COVER

- NOTES:**
1. CUT ALL WIRES 7" (178mm).
 2. STRIP ALL WIRES 1/4" (6mm).
 3. ATTACH GROUND TERMINAL TO GREEN WIRE USING SUITABLE CRIMPING TOOL.
 4. REMOVE JUNCTION BOX COVER.
 5. REMOVE TERMINAL BLOCK.
 6. FEED WIRES INTO JUNCTION BOX AND THREAD CONTROL INTO JUNCTION BOX. USE THREAD SEALANT AS NEEDED. THREAD LOCKER MAY BE USED TO SECURE THE ALIGNMENT BETWEEN THE JUNCTION BOX AND CONTROL.
 7. SECURE GREEN WIRE TERMINAL TO JUNCTION BOX USING THE SUPPLIED GROUNDING SCREW.
 8. POSITION TERMINAL BLOCK APPROXIMATELY AS SHOWN AND CONNECT WIRES. SEE PRODUCT NAMEPLATE, BULLETIN OR INSTALLATION & MAINTENANCE MANUAL FOR WIRE COLOR CODES. ALSO AVAILABLE ONLINE AT www.ueonline.com.
 9. SECURE TERMINAL BLOCK TO JUNCTION BOX WITH SUPPLIED MOUNTING SCREW AND ADDED WASHER. ADJUST POSITION WITH MOUNTING TRACK AS NEEDED.
 10. ATTACH JUNCTION BOX COVER.

THIS DOCUMENT IS PROPRIETARY PROPERTY OF UNITED ELECTRIC CONTROLS. UNAUTHORIZED USE IS STRICTLY PROHIBITED.

SYM	DESCRIPTION	DATE	DWN	APPD
A	FIRST ISSUE: ECN#E36444	6-24-10	SR	W/K
B	ADDED WASHER UNDER MOUNTING SCREW AND ADDED WASHER TO NOTE #9. ECN# E4185.	10-31-11	RCI	RAMI

ORIGINAL DATE	6-24-10	TITLE	ATEX	DF 001D
DRWN	S. ROBAK		JUNCTION BOX	
CHKD	PLW		INSTALLATION	
APPD	W/K		INSTRUCTION SHEET	
UNLESS OTHERWISE SPECIFIED DIMENSIONS ARE IN INCHES TOLERANCES ON FRACTIONS ±1/64		SCALE	NONE	
2 PLACE DEC 3 PLACE DEC ANGLES ±0.010 ±1/2°		DWG NO	A-6271-329	
DD NOT SCALE THIS DRAWING				



UNITED ELECTRIC CONTROLS COMPANY
WATERTOWN * MASSACHUSETTS