



A-13952

APPROVALS:  
 cULus  
 CLASS LISTED  
 CLASS I, DIVISION 1,  
 GROUPS B, C & D  
 CLASS II, DIVISION 1,  
 GROUPS E, F & G  
 CLASS III  
 -50°C ≤ Tamb ≤ +71°C  
 CLASS I, ZONE 1, GROUP IIB + H<sub>2</sub> T6  
 ENCLOSURE TYPE 4X, 7, 9

ATEX DIRECTIVE 94/9/EC  
 II 2 G Ex d IIC T6  
 II 2 D Ex tD A21 IP66 T+85°C  
 Tamb = -40°C TD +75°C

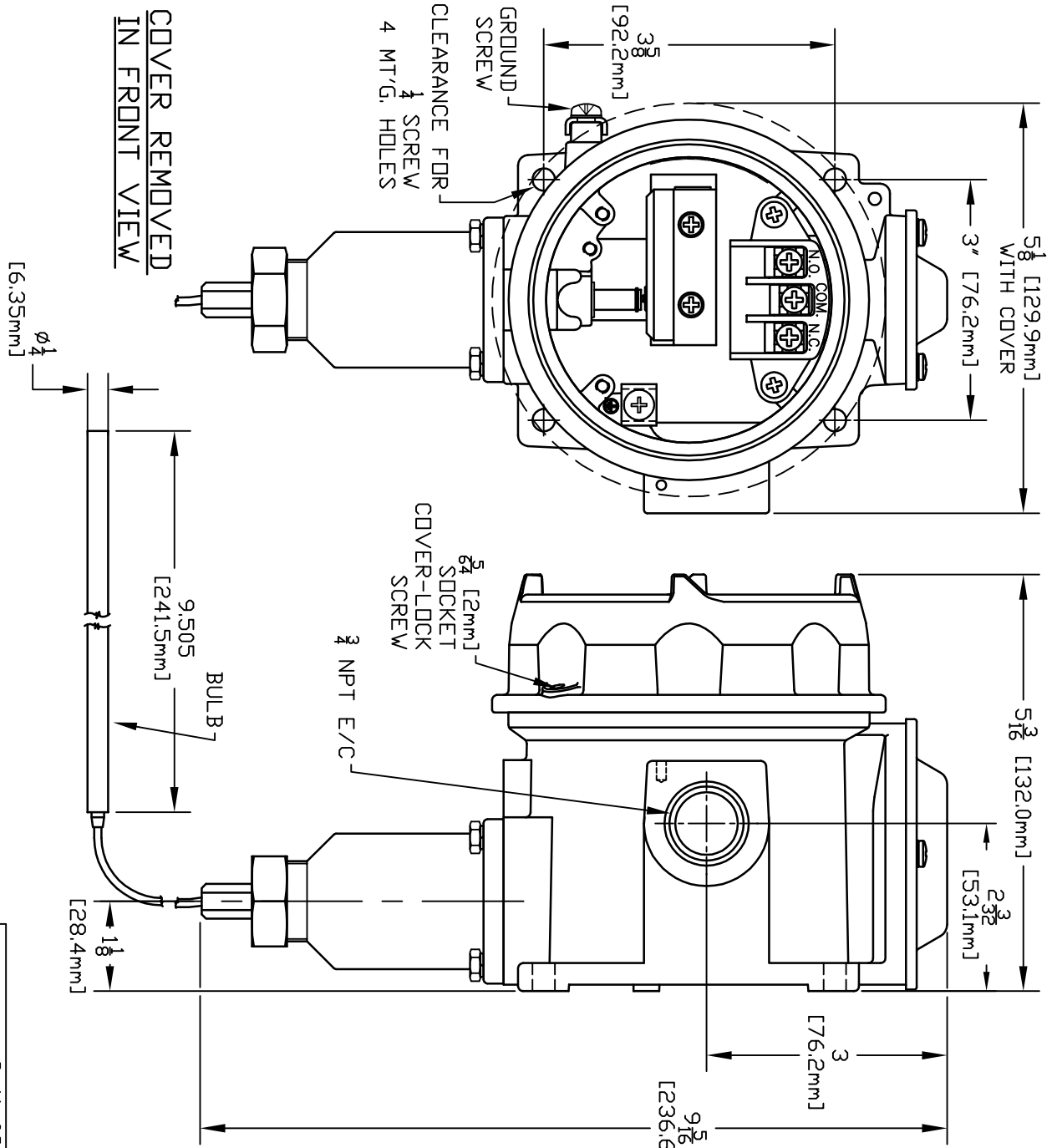
CE COMPLIANT TO  
 APPLICABLE DIRECTIVE(S)

I & M SHEET IMT120

**SPECIFICATIONS:**

RANGE: 25° TO 325°F WITH OVERTEMPERATURE PROTECTION TO 375°F, WITH BULB & 6° CAPILLARY IN THE MEDIUM.  
 SWITCH: BMIR (6259-451) SPDT  
 E/R: 22 AMP 125/250/480 VAC (PRINTED ON NAMEPLATE).  
 DIFFERENTIAL: 6°F MAX.  
 CAPILLARY: 10 FEET STAINLESS STEEL STORAGE AMBIENTS: -65° TO +160°F.  
 OPERATING AMBIENTS: -58° TO +160°F.  
 SET POINT MAY SHIFT AT EXTREMES OF AMBIENTS UP TO 2% OF RANGE FOR EACH 50°F CHANGE IN AMBIENT TEMPERATURE FROM -40° TO +160°F.  
 SET TO TRANSFER @ 175±6°F ON RISE. CALIBRATION ACCURACY: ±6°F BETWEEN LIMITS OF 150° TO 200°F, INCREASING TO ±15°F BETWEEN THE LIMITS OF 25° TO 149°F & 201° TO 325°F.

CONDITIONS UNDER WHICH TOLERANCES APPLY:  
 A.) 6 INCHES CAPILLARY INSTALLED WITH BULB.  
 B.) AMBIENT TEMPERATURE OF CONTROL HEAD & REMAINING CAPILLARY 60° TO 90°F  
 POINTER TO BE SET @ MID RANGE FOR SHIPPING



COVER REMOVED  
 IN FRONT VIEW

ORIGINAL DATE 8-11-09		TITLE	
DRWN SR	PLW	E121-13273	
CHKD PLW	R. MCCAREY	UNITED ELECTRIC CONTROLS COMPANY WATERTOWN * MASSACHUSETTS	
APPD R. MCCAREY	UNLESS OTHERWISE SPECIFIED DIMENSIONS ARE IN INCHES	DF 001 REV. C	
DO NOT SCALE THIS DRAWING		UE STD HEATRACE	DWG NO A-13952
REVISIONS		SCALE 1:2	
B	UPDATED ENCLOSURE. EON#E4345.	2-17-12	RCI SJM
A	FIRST ISSUE. REPLACES SPEC. SHEET. EON#E3275	8-11-09	S.R. RAM
SYM	DESCRIPTION	DATE	DWN APPD