

A-13930

DISPLAY CAN BE ROTATED 180° BOTH DIRECTIONS

SPECIFICATIONS:

- MECHANICAL:**
 - WETTED MATERIALS: 316 STAINLESS STEEL
 - ENCLOSURE: TYPE 360 ALUMINUM; EPOXY POWDER COATED
- ELECTRICAL:**
 - ELECTRICAL CONNECTION: 3 POSITION TERMINAL BLOCK, 22-14 AWG Max
 - SWITCH SPECS:
 - POWER INPUT: 2 WIRE 120 V DISCRETE INPUT POWERED (90-130 VAC/VDC) @ 1mA
 - SWITCH OUTPUT: 90 TO 130 VAC/VDC @ 0.1A, 3.75mA MIN. LOAD REQUIRED
 - SWITCH STATE MAX : 90-130 VAC/VDC @ 1mA (V. OPEN)
 - 13 VAC/VDC @ 100mA (V. CLOSED)

APPROVALS:

- cULus LISTED**
 - CLASS I, DIVISION 1, GROUPS A, B, C & D;
 - CLASS II, DIVISION 1, GROUPS E, F & G; CLASS III
 - CLASS I, ZONE 1, AEx d IIC T5; CLASS 1, ZONE 1, Ex d IIC T5
 - Tamb = -40°C TO +85°C (-40°F TO 185°F)
 - ENCLOSURE TYPE 4X; IP66
- ATEX APPROVED**
 - II 2 G Ex d IIC T5
 - II 2 D Ex td A21 IP66 T+90C
 - DEMKO 09 ATEX 0813748X
 - Tamb = -40°C TO +85°C (-40°F TO 185°F)
- IECEx APPROVED**
 - IECEx UL 08.0017
 - Ex d IIC T5
 - Ex td A21 IP66 T+90C
 - Tamb. = -40°C TO +85°C (-40°F TO 185°F)

MODEL TTC	TEMPERATURE RANGE	EXTENSION LENGTH	
		INCHES	[cm]
N-U-N LENGTH	-40 TO 900°F / -40 TO 482°C	4"-10" IN 1 INCH INCREMENTS	[10.1-25.4]
SHEATH LENGTH "L"	-40 TO 900°F / -40 TO 482°C	UP TO 60" MAX	[152.4] MAX

THIS DOCUMENT IS PROPRIETARY PROPERTY OF UNITED ELECTRIC CONTROLS. UNAUTHORIZED USE IS STRICTLY PROHIBITED.

REV.	DESCRIPTION	DATE	DRWN	APPD
B	SEE PG. 2 OF 2. ECN#E3750	9-15-10	SR	RAM
A	FIRST ISSUE. ECN#E3133	4-7-09	RAM	RAM

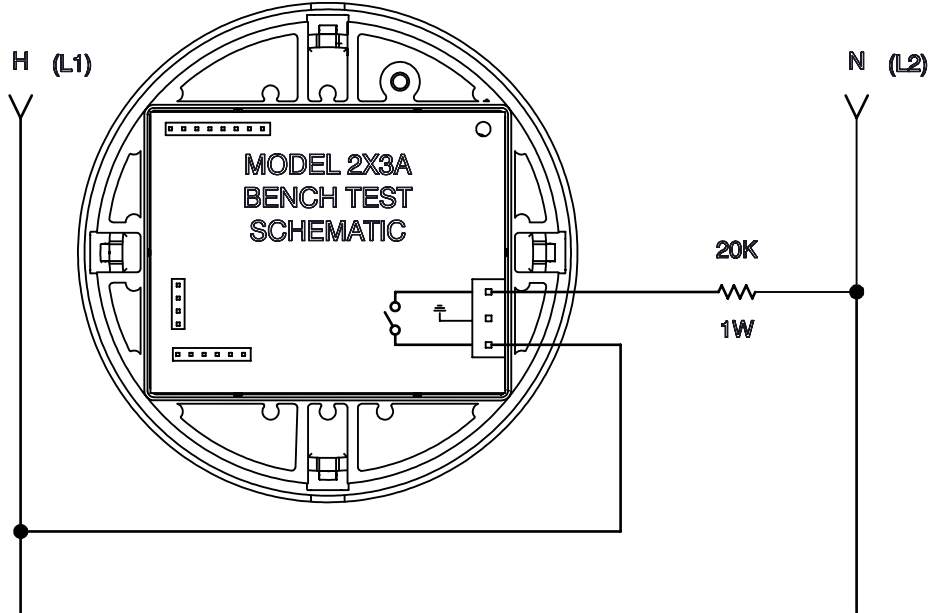
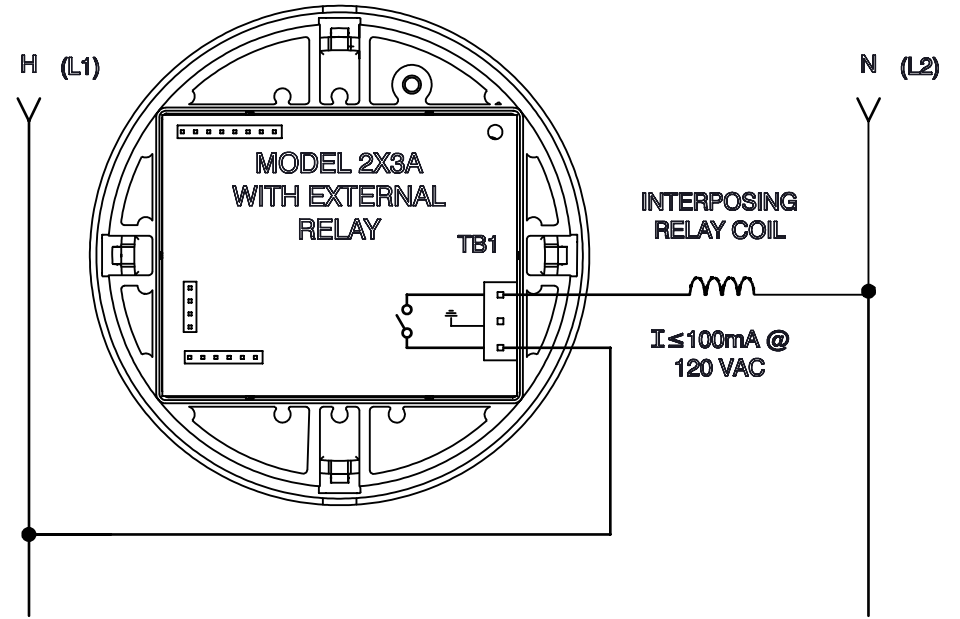
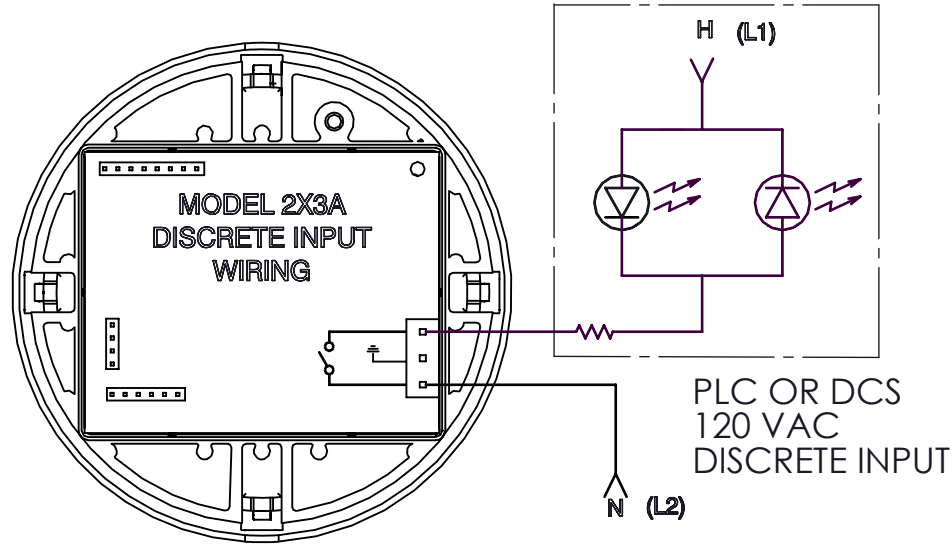
ORIGINAL DATE	4-7-09
DRWN	RAM
CHKD	PLW
APPD	R. McCAREY
UNLESS OTHERWISE SPECIFIED DIMENSIONS ARE IN INCHES	
TOLERANCES ON FRACTIONS ±1/64	
2 PLACE DEC	3 PLACE DEC
±0.010	±0.005
ANGLES	±1/2°
DO NOT SCALE THIS DRAWING	

TITLE
2X3A SPRING LOADED TEMP. SWITCH
 USED ON:
 SCALE 1:1

UNITED ELECTRIC CONTROLS COMPANY
 WATERTOWN * MASSACHUSETTS
 DWG NO Page 1 of 2
A-13930

RECOMMENDED WIRING SCHEMES

A-13930



THIS DOCUMENT IS PROPRIETARY PROPERTY OF UNITED ELECTRIC CONTROLS. UNAUTHORIZED USE IS STRICTLY PROHIBITED.

REV.	DESCRIPTION	DATE	DRWN	APPD
B	REVISED "PLC OR DCS" WIRING DIAGRAM TO BE VISIBLE IN PDF FILE. ECN#E3750	9-15-10	SR	RAM
A	FIRST ISSUE. ECN#E3133	4-7-09	RAM	RAM

ORIGINAL DATE	4-7-09
DRWN	RAM
CHKD	PLW
APPD	R. McCAREY
UNLESS OTHERWISE SPECIFIED DIMENSIONS ARE IN INCHES	
TOLERANCES ON FRACTIONS ±1/64	
2 PLACE DEC	3 PLACE DEC
±0.010	±0.005
ANGLES	±1/2°
DO NOT SCALE THIS DRAWING	

TITLE	2X3A SPRING LOADED TEMP. SWITCH
USED ON:	
SCALE	1:1

UNITED ELECTRIC CONTROLS COMPANY
WATERTOWN • MASSACHUSETTS

DWG NO A-13930 Page 2 of 2