

**SPECIFICATIONS:**

**MECHANICAL:**  
 WETTED MATERIALS: 316 STAINLESS STEEL  
 ENCLOSURE: TYPE 360 ALUMINUM; EPOXY POWDER COATED

**ELECTRICAL:**  
 ELECTRICAL CONNECTION:  
 3 POSITION TERMINAL BLOCK, 22-14 AWG Max  
**SWITCH SPECS:**  
 POWER INPUT: 2 WIRE 24 VDC DISCRETE INPUT POWERED (12-30 VDC) @750µA  
 SWITCH OUTPUT: 12 TO 30 VDC @ 40mA, 2.3 mA MIN. LOAD REQUIRED.  
 SWITCH STATE MAX.: 12-30 VDC @750 µA (V. OPEN)  
 4.7 VDC @40 mA (V. CLOSED)

**APPROVALS:**

cULus LISTED  
 CLASS I, DIVISION 1, GROUPS A, B, C & D;  
 CLASS II, DIVISION 1, GROUPS E, F & G; CLASS III  
 CLASS I, ZONE 1, AEx d IIC T5; CLASS 1, ZONE 1, Ex d IIC T5  
 Tamb = -40°C TO +85°C (-40°F TO 185°F)  
 ENCLOSURE TYPE 4X; IP66

ATEX APPROVED  
 II 2 G Ex d IIC T5  
 II 2 D Ex ID A21 IP66 T+90C  
 DEMKO 09 ATEX 0813748X  
 Tamb = -40°C TO +85°C (-40°F TO 185°F)

IECEx APPROVED  
 IECEx UL 08.0017  
 Ex d IIC T5  
 Ex ID A21 IP66 T+90C  
 Tamb = -40°C TO +85°C (-40°F TO 185°F)

MODEL TLX	TEMPERATURE RANGE	SHEATH LENGTH	
		INCHES	[cm]
TL1	-40 TO 450°F/ -40 TO 232°C	4"	[10.1]
TL2	-40 TO 450°F/ -40 TO 232°C	6"	[15.2]
TL3	-40 TO 450°F/ -40 TO 232°C	10"	[25.4]

REV.	DESCRIPTION	DATE	DRWN	APPD
B	CORRECT DIMENSIONS FOR ENCLOSURE REDESIGN. ECN# E5348	1/22/2015	VIK	ASK
A	FIRST ISSUE. ECN#E3133	4-7-09	RAM	RAM

THIS DOCUMENT IS PROPRIETARY PROPERTY OF UNITED ELECTRIC CONTROLS. UNAUTHORIZED USE IS STRICTLY PROHIBITED.

ORIGINAL DATE	4-7-09
DRWN	RAM
CHKD	PLW
APPD	RAM
UNLESS OTHERWISE SPECIFIED DIMENSIONS ARE IN INCHES TOLERANCES ON FRACTIONS ±1/64 2 PLACE DEC 3 PLACE DEC ANGLES ±0.010 ±0.005 ±1/2°	
DO NOT SCALE THIS DRAWING	

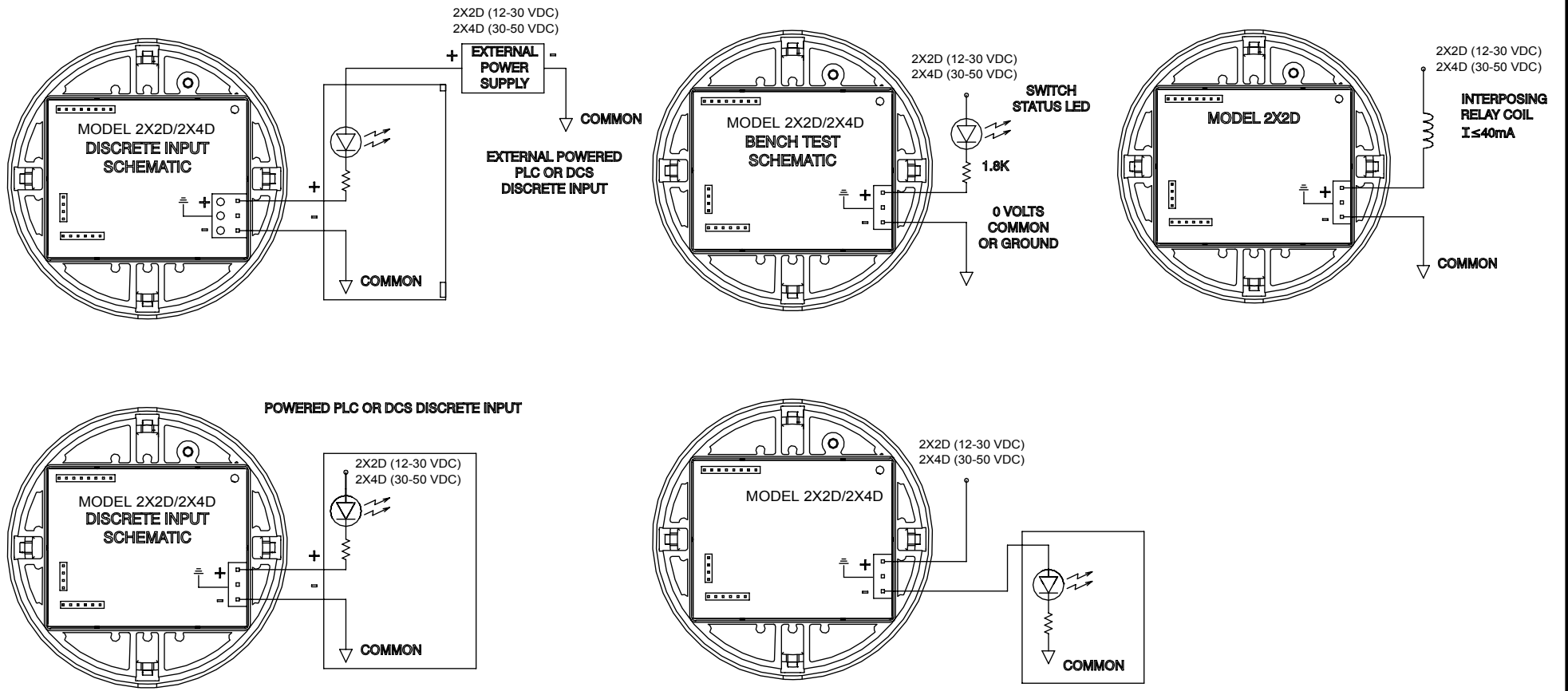
TITLE  
**2X2D LOCAL WELDED TEMP. SWITCH**

USED ON:  
 SCALE 1:1

UNITED ELECTRIC CONTROLS COMPANY  
 WATERTOWN \* MASSACHUSETTS

DWG NO Page 1 of 2  
**A-13898**

## RECOMMENDED WIRING SCHEMES



THIS DOCUMENT IS PROPRIETARY PROPERTY OF UNITED ELECTRIC CONTROLS. UNAUTHORIZED USE IS STRICTLY PROHIBITED.

B	SEE PAGE 1 OF 2. ECN# E5348	1/22/2015	VIK	ASK
A	FIRST ISSUE. ECN# E3133	4-7-09	RAM	RAM
REV.	DESCRIPTION	DATE	DRWN	APPD

ORIGINAL DATE	4-7-09	
DRWN	RAM	
CHKD	PLW	
APPD	RAM	
UNLESS OTHERWISE SPECIFIED DIMENSIONS ARE IN INCHES		
TOLERANCES ON FRACTIONS ±1/64		
2 PLACE DEC	3 PLACE DEC	ANGLES
±0.010	±0.005	±1/2°
DO NOT SCALE THIS DRAWING		

TITLE	2X2D LOCAL WELDED TEMP. SWITCH
USED ON:	
SCALE	1:1

**UE**  
UNITED ELECTRIC CONTROLS COMPANY  
WATERTOWN \* MASSACHUSETTS

DWG NO A-13898 Page 2 of 2