

SPECIFICATIONS:

(SPECIFICATIONS AT 25°C (77°F) AND NOMINAL VOLTAGE UNLESS OTHERWISE NOTED.)

MECHANICAL:

WETTED MATERIALS: PROCESS CONNECTION - 316 st/st
 WEIGHT: 1.58 LBS. (0.71 kg)
 ENCLOSURE: TYPE 380 ALUMINUM; EPOXY POWDER COATED

ELECTRICAL:

ELECTRICAL CONNECTION:
 4 POSITION TERMINAL BLOCK
 SWITCH SPECS.:

90 TO 130 VAC 10A AT Tamb. 38°C (100°F)
 DERATE AT 1.8A PER 10°C (18°F)

OPERATING:

OVERALL ACCURACY:

±1% OF MAX. OPERATING RANGE VALUE

SET POINT REPEATABILITY:

±0.2% OF MAX. OPERATING RANGE VALUE

LONG TERM STABILITY:

±0.25 OF RANGE PER YEAR, MAX.

AMBIENT TEMPERATURE:

OPERATING: -40°C TO 70°C (-40°F TO 158°F)

LCD VISIBILITY TEMP: -12°C TO 70°C (10°F TO 158°F)

STORAGE: -40°C TO 85°C (-40°F TO 185°F)

MEDIA TEMPERATURE:

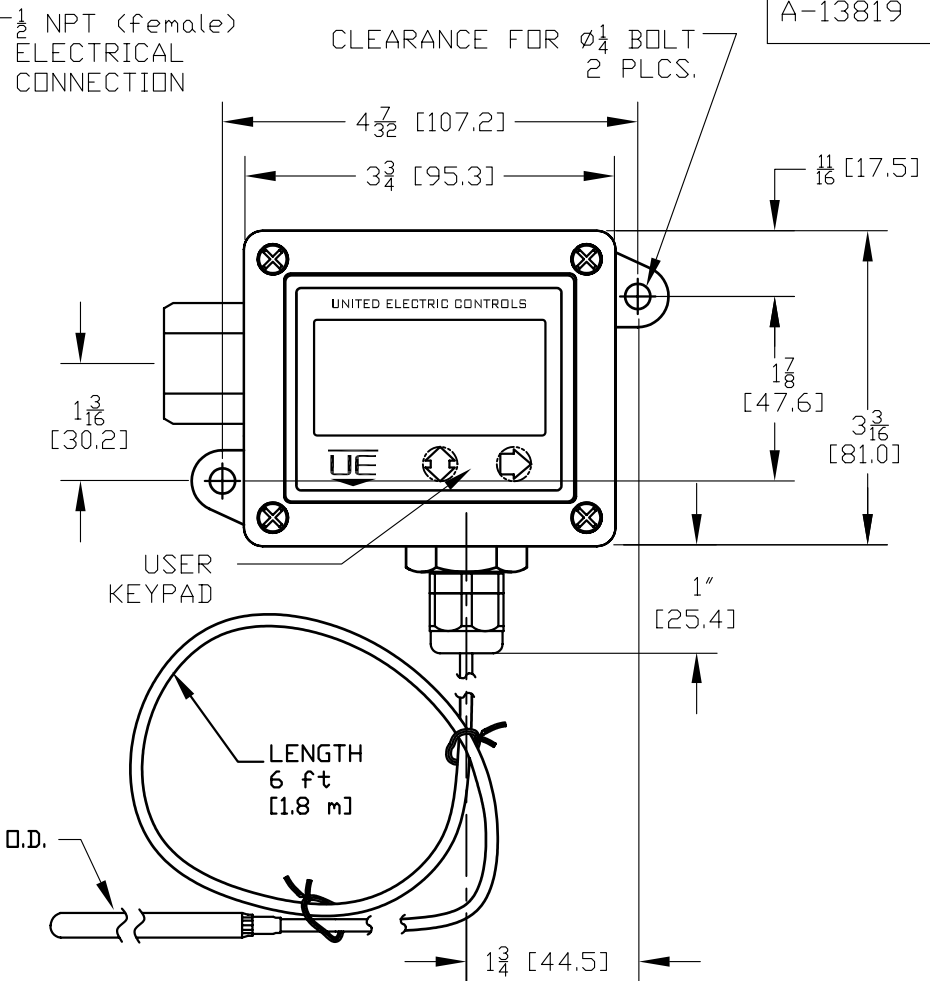
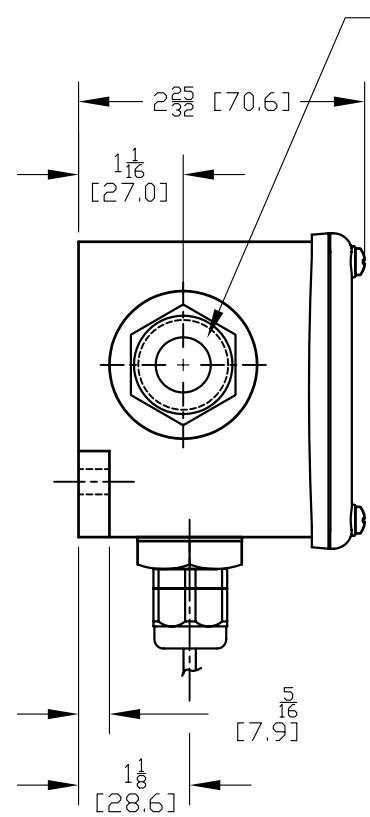
-45°C TO 232°C (-50°F TO 450°F)

REFER TO NAMEPLATE FOR OPERATING TEMPERATURE RANGE.

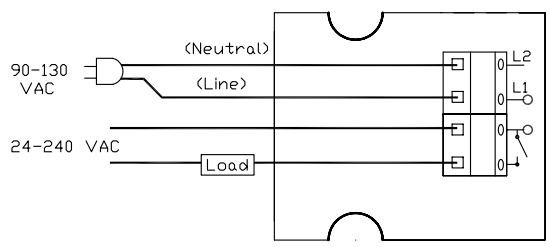
APPROVALS:

NONINCENDIVE APPLICATIONS:

UL LISTED, cUL CERTIFIED
 CLASS I, DIVISION 2, GROUPS A, B, C & D;
 CLASS II, DIVISION 2, GROUPS F & G;
 CLASS III;
 CLASS I, ZONE 2 AEx nC IIC T4A;
 CLASS I, ZONE 2 Ex nC IIC T4A;
 Tamb.=-40°C TO +70°C (-40°F TO 158°F)
 ENCLOSURE TYPE 4X



TERMINAL WIRING



FOUR WIRE CONFIGURATION USING ISOLATED (POTENTIAL FREE) SWITCH CONTACTS

MODEL Rx	LENGTH
R1	6' [1.8m]
RC	CUSTOM

AGENCY CRITICAL COMPONENT, NO SUBSTITUTIONS ALLOWED WITHOUT UEC ENGINEERING APPROVAL.

SYMBOL	DESCRIPTION	DATE	DWN	APPD
D	REVISED TITLE BLOCK INFO. ECN#E2723	6-2-08	SR	LK
C	ADDED OPERATING TEMPERATURE NOTE. ECN#E1165	3/21/05	PLW	D.W.
B	TERMINAL WIRING WAS IN CHART FORM. ADDED SENSOR CHART. APPROVALS, T4A WAS TS. ECN# E0878	7/29/04	PLW	D.W.
A	FIRST ISSUE. ECN# E0809	5/27/04	PLW	D.W.

ORIGINAL DATE	5/27/04
DRWN	PLW
CHKD	A.B.
APPD	D.W.
UNLESS OTHERWISE SPECIFIED DIMENSIONS ARE IN INCHES	
DO NOT SCALE THIS DRAWING	

TITLE	ONE SERIES 4W3A01TRx
	REMOTE LOW TEMPERATURE SINGLE SWITCH
SCALE	.5:1

DF001D

UNITED ELECTRIC CONTROLS COMPANY
 WATERTOWN * MASSACHUSETTS

DWG NO
 A-13819