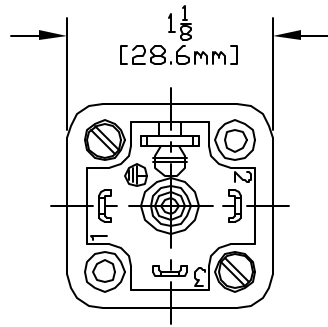
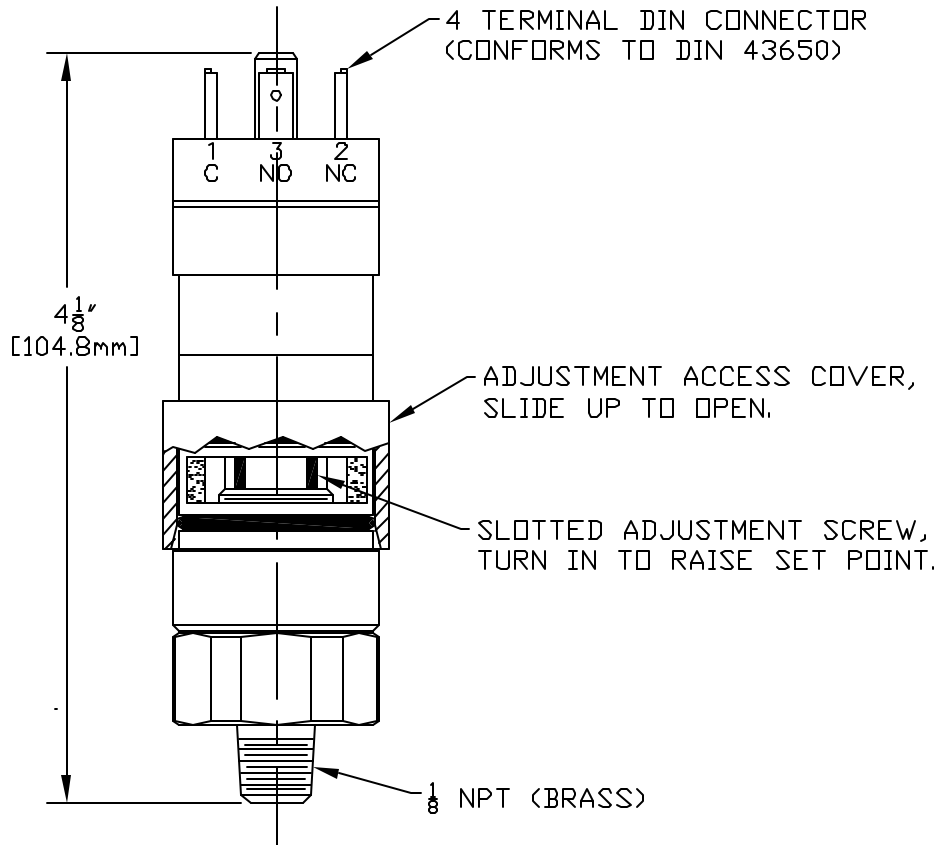


A-12920



TERMINALS:
 #1 COMMON
 #2 NORMALLY CLOSED
 #3 NORMALLY OPEN

MODEL NO.	ADJUSTABLE RANGE	
	psi	bar
10-F10	4 TO 50	0.3 TO 3.4
10-F11	10 TO 150	0.7 TO 10.3
10-F12	30 TO 600	2.1 TO 41.0




SPECIFICATIONS:
 UL RECOGNIZED, CSA CERTIFIED
 E/R: 5 AMPS 250 VAC

SYM	DESCRIPTION	DATE	DVN	APPD
H	CHANGED kPa TO bar. ECN#E0044	10-23-02	S.R.	H.N.
G	REVISED RANGES PER ECN#C5565	5-10-96	P.V.	L.K.
F	REDRAWN, DELETED (VIOLET) FROM COMMON; (BLACK) FROM NORMALLY CLOSED; & (BLUE) FROM NORM. OPEN. ECN#C5459	4-11-96	P.W.	L.K.
REVISIONS				

ORIGINAL DATE 5-28-92
DRWN PETER WEILER
CHKD PETER WEILER
APPD L. KHATCHADORIAN
UNLESS OTHERWISE SPECIFIED DIMENSIONS ARE IN INCHES
DO NOT SCALE THIS DRAWING

TITLE
 10-F
 SERIES
 (DIAPHRAGM)
 SCALE FULL

DF001D

 UNITED ELECTRIC
 CONTROLS COMPANY
 WATERTOWN * MASSACHUSETTS
 DVG NO
 A-12920