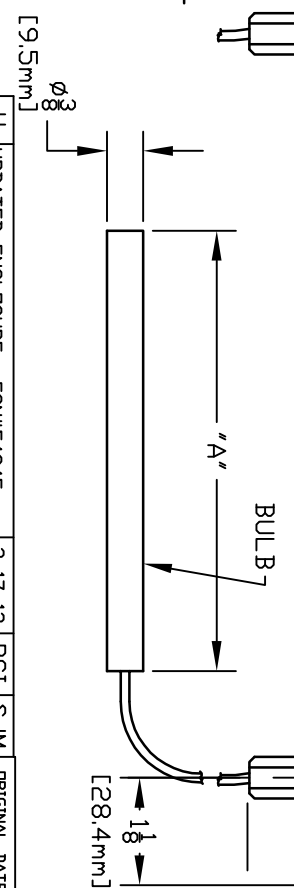


COVER REMOVED
IN FRONT VIEW



8BS	350 TD	640 TD	175 TD	335 TD	3-1/4'	82.6mm
SBS	-20 TD	80 TD	-30 TD	25 TD	5"	127mm
4BS	25 TD	100 TD	-5 TD	35 TD	6-3/4'	171.5mm
3BS	100 TD	400 TD	35 TD	200 TD	2-1/8'	54.0mm
2BSB	30 TD	250 TD	0 TD	120 TD	2-5/8'	66.7mm
2BSA	-120 TD	100 TD	-85 TD	35 TD	2-5/8'	66.7mm
MODEL	°F		°C		°A' DIM.	
ADJUSTABLE RANGE					BULB	

U	UPDATED ENCLOSURE.	ECN#E4345.	2-17-12	RCI	SJM
T	REPLACED CENELEC APPROVAL WITH ATEX APPROVAL.	ECN#E0368	6-17-03	S.R.	LK
S	ADDED CENELEC & CE APPROVALS.	ECN#E0009	8-27-02	S.R.	LK
R	UPDATED ENCLOSURE & COVER.	ECN#C9734	3-26-02	S.R.	LK
P	REDRAWN, DELETED MODEL 9.	DC#25110	3-11-97	S.R.	AB
SYM	DESCRIPTION	DATE	DWN	APPD	

ORIGINAL DATE 7-29-86
 DRWN PETER WEILLER
 CHKD N.MOCKAY JR.
 APPD A.MINASSIAN
 UNLESS OTHERWISE SPECIFIED
 DIMENSIONS ARE IN INCHES

TITLE E122
 SCALE 1:2

UNITED ELECTRIC
 CONTROLS COMPANY
 WATERTOWN * MASSACHUSETTS
 DWG NO A-12145

APPROVALS:
 CULUS LISTED
 CLASS I, DIVISIONS 1 & 2,
 GROUPS B, C & D
 CLASS II, DIVISIONS 1 & 2,
 GROUPS E, F & G
 CLASS III
 -50°C ≤ Tamb. ≤ +71°C
 CLASS I, ZONE 1, GROUP IIB + H₂ T6
 ENCLOSURE TYPE 4X, 7, 9
CE 0539 ATEX APPROVED
 II 2 G/D EEx d IIC T6
 -40°C ≤ Tamb. ≤ +71°C
 IP66
 CE COMPLIANT TO
 APPLICABLE DIRECTIVE(S)
 I & M SHEET IMT120