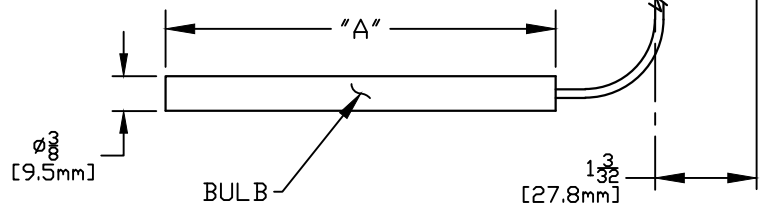


APPROVALS:
 cULus LISTED
 CLASS I, DIVISIONS 1 & 2, GROUPS B, C & D
 CLASS II, DIVISIONS 1 & 2, GROUPS E, F & G
 CLASS III
 -50°C ≤ Tamb. ≤ +71°C
 CLASS I, ZONE 1, GROUP IIB + H₂ T6
 ENCLOSURE TYPE 4X, 7, 9

CE 0539 ATEX APPROVED
 Ex II 2 G/D EEx d IIC T6
 -40°C ≤ Tamb. ≤ +71°C
 IP66

CE COMPLIANT TO APPLICABLE DIRECTIVE(S)

I & M SHEET IMT120



— OBS. DC#27431

8BS	50 TO 650	10 TO 340	3-1/4"	82.6mm
7BS	0 TO 400	-20 TO 200	3"	76.2mm
6BS	0 TO 250	-20 TO 120	4-1/2"	114.3mm
5BS	-40 TO 180	-40 TO 80	5"	127.0mm
4BS	-40 TO 120	-40 TO 50	6-3/4"	171.5mm
3BS	-125 TO 500	-85 TO 260	2-1/8"	54.0mm
2BS	-125 TO 350	-85 TO 175	2-5/8"	66.7mm
1BS	-180 TO 120	-115 TO 50	3-3/4"	95.3mm
MODEL NO.	°F	°C	"A" DIM.	BULB
	ADJUSTABLE RANGE			

SYM	DESCRIPTION	DATE	DWN	APPD
N	REPLACED CENELEC APPROVAL WITH ATEX APPROVAL. ECN#E0368	6-17-03	S.R.	LK
M	REVISED BULB ("A") DIMS.: 3BS WAS 1-1/8", 7BS WAS 2-7/8", 8BS WAS 3-1/8". ECN#E0036	9-17-02	S.R.	HN
L	ADDED CENELEC & CE APPROVALS. ECN#E0009	8-27-02	S.R.	LK
K	UPDATED ENCLOSURE & COVER. ECN#C9734	2/27/02	S.R.	LK
J	REDRAWN. DELETED MODEL 9. DC#25110	3-11-97	SR	A.B.

ORIGINAL DATE 2-4-86
 DRWN PETER WEILER
 CHKD A.J. FLECCA
 APPD A. MINASSIAN
 UNLESS OTHERWISE SPECIFIED DIMENSIONS ARE IN INCHES

TITLE F120
 SCALE 1:2

DF001 REV. B

 UNITED ELECTRIC CONTROLS COMPANY
 WATERTOWN * MASSACHUSETTS
 DWG NO A-12117

REVISIONS

DO NOT SCALE THIS DRAWING