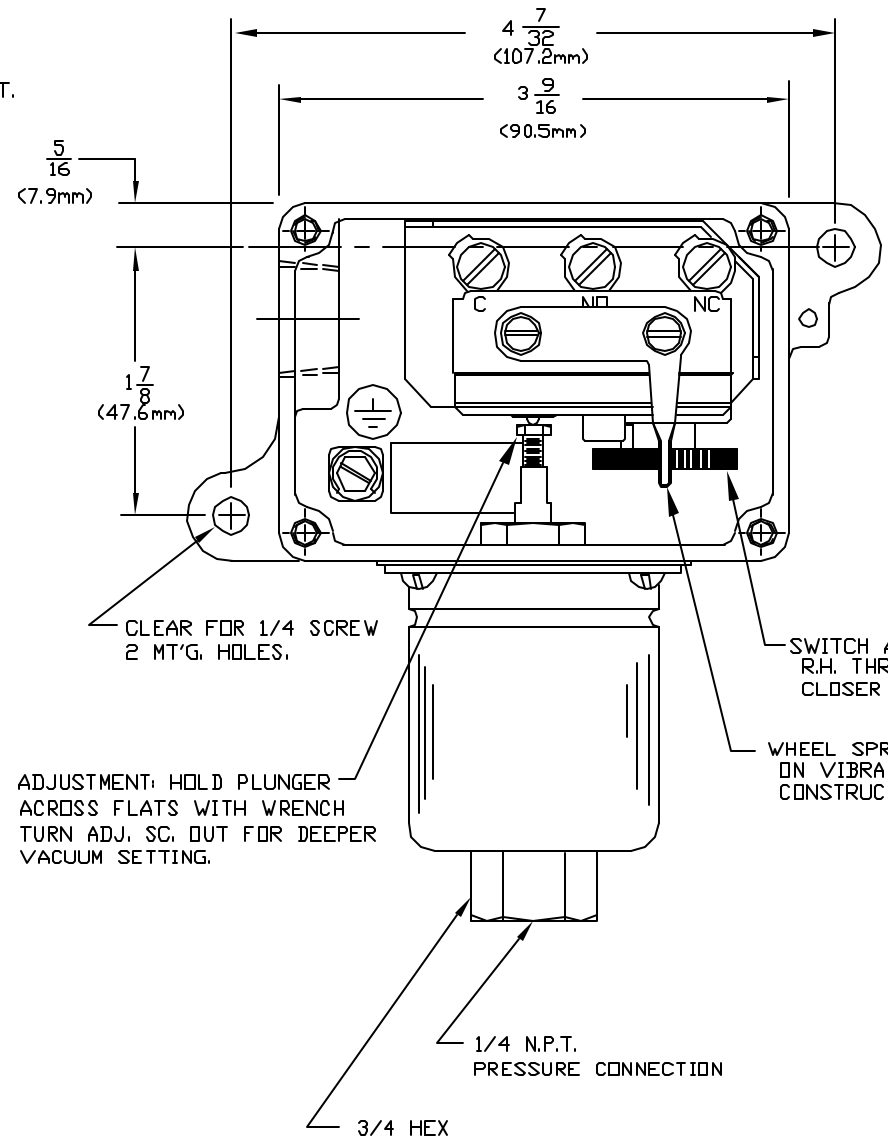


1/2 N.P.T.



CLEAR FOR 1/4 SCREW  
2 MT'G. HOLES.

ADJUSTMENT: HOLD PLUNGER  
ACROSS FLATS WITH WRENCH  
TURN ADJ. SC. OUT FOR DEEPER  
VACUUM SETTING.


SWITCH ADJUSTMENT:  
R.H. THREAD - TURN IN FOR  
CLOSER SWITCH DIFFERENTIAL

WHEEL SPRING 6236-142 USED  
ON VIBRATION RESISTANT  
CONSTRUCTION (NOT STANDARD)

1/4 N.P.T.  
PRESSURE CONNECTION

3/4 HEX

COVER REMOVED IN FRONT VIEW

ORIGINAL DATE 8/13/74	TITLE	DF001
DRWN K. SCIARRETTA	TYPE J6D	REV. B
CHKD A.B.	MODELS: 126	 UNITED ELECTRIC CONTROLS COMPANY WATERTOWN * MASSACHUSETTS
APPD A.B.	134	
UNLESS OTHERWISE SPECIFIED DIMENSIONS ARE IN INCHES TOLERANCES ON FRACTIONS ±1/64		DWG NO
P PLACE DEC 3 PLACE DEC ANGLES ±.010 ±.005 ±1/2° DO NOT SCALE THIS DRAWING		A-11385
SCALE 3/4:1		

H	DESCRIPTION	DATE	PLW	L.K.
H	REDRAWN, NO CHANGE. ECN#C5688	7/5/96	PLW	L.K.
SYM	REVISIONS	DATE	DWN	APPD